

# *Unit* PLANS

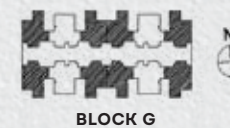
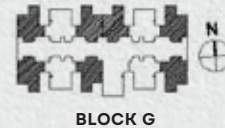
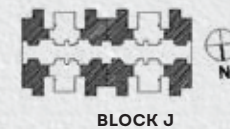
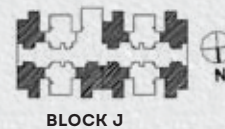






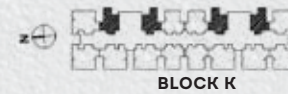
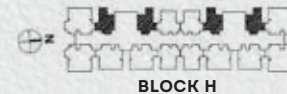
# Unit PLAN

TYPE 1  
2BHK + 2T



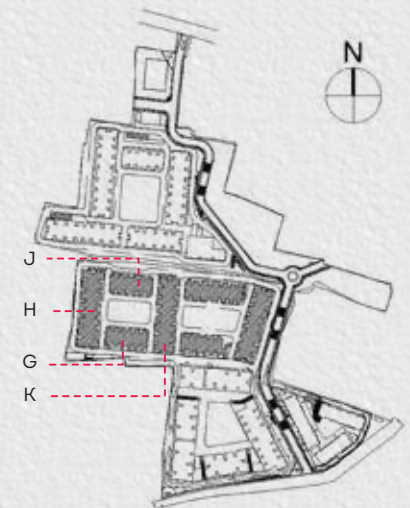
Ground & First Floor Plan

Typical Floor Plan



Ground & First Floor Plan

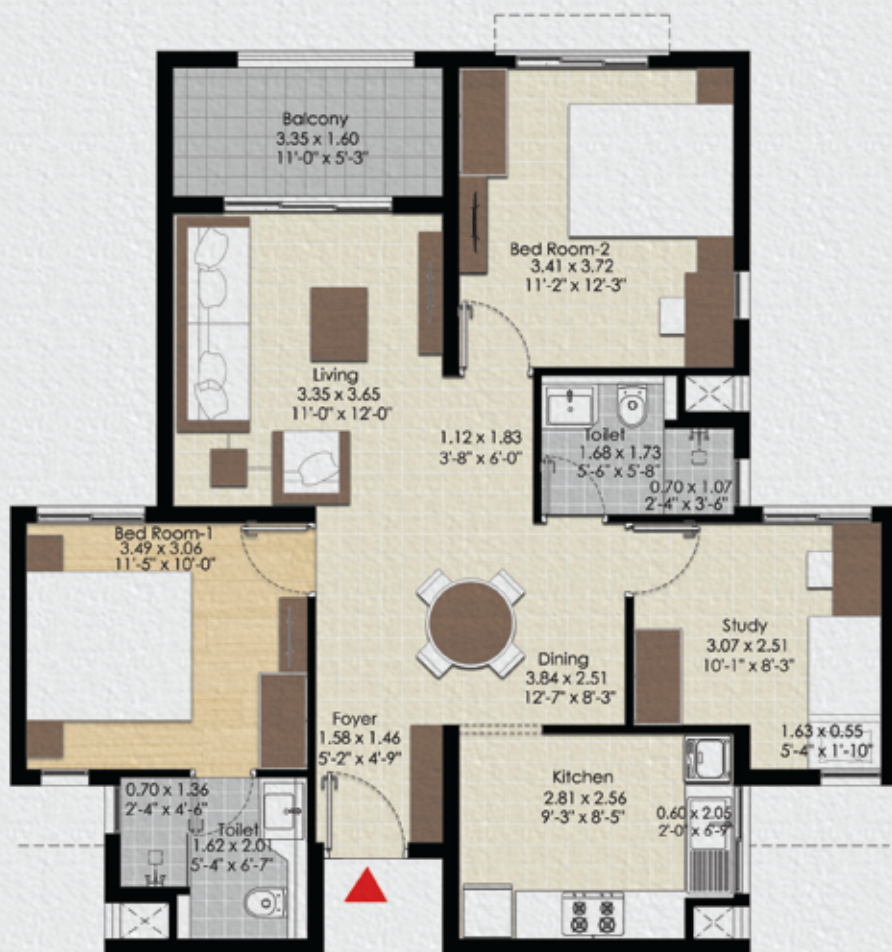
Ground & First Floor Plan



SUPER BUILT-UP AREA	CARPET AREA	BALCONY/ UTILITY AREA
<b>98.69 SQ.M./ 1062 SQ.FT.</b>	<b>63.03 SQ.M./ 678 SQ.FT.</b>	<b>5.14 SQ.M./ 55 SQ.FT.</b>

The information depicted herein viz., master plans, floor plans, furniture layout, fittings, illustrations, specifications, designs, dimensions, rendered views, colours, amenities and facilities etc., are subject to change without notifications as may be required by the relevant authorities or the developer's architect, and cannot form part of an offer or contract. Whilst every care is taken in providing this information, the Developer cannot be held liable for variations. All illustrations and pictures are artist's impression only. The information are subject to variations, additions, deletions, substitutions and modifications as may be recommended by the company's architect and/or the relevant approving authorities. The Developer is wholly exempt from any liability on account of any claim in this regard. (1 square metre = 10.764 square feet). E & OE.



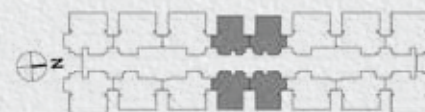


# Unit PLAN

TYPE 2  
2BHK + 2T + STUDY



BLOCK K



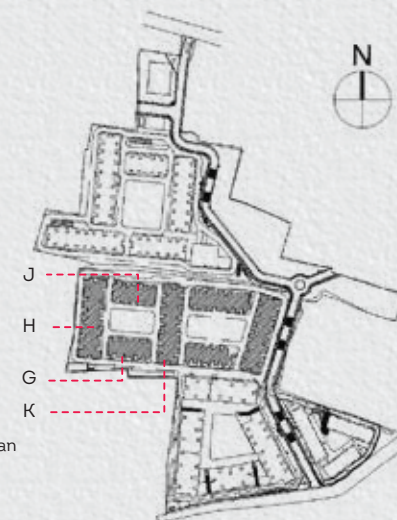
BLOCK H

Ground, First & Typical Floor Plan



BLOCK G&J

Ground, First & Typical Floor Plan



SUPER BUILT-UP AREA	CARPET AREA	BALCONY/ UTILITY AREA
119.66 SQ.M./ 1288 SQ.FT.	77.98 SQ.M./ 839 SQ.FT.	5.36 SQ.M./ 58 SQ.FT.

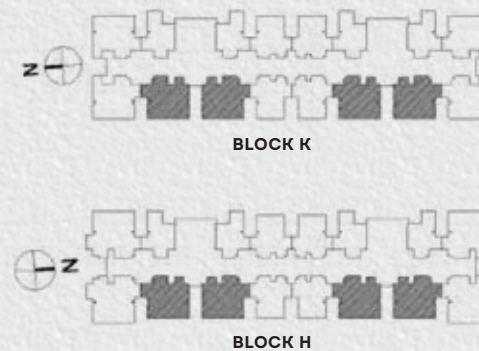
The information depicted herein viz., master plans, floor plans, furniture layout, fittings, illustrations, specifications, designs, dimensions, rendered views, colours, amenities and facilities etc., are subject to change without notifications as may be required by the relevant authorities or the developer's architect, and cannot form part of an offer or contract. Whilst every care is taken in providing this information, the Developer cannot be held liable for variations. All illustrations and pictures are artist's impression only. The information are subject to variations, additions, deletions, substitutions and modifications as may be recommended by the company's architect and/or the relevant approving authorities. The Developer is wholly exempt from any liability on account of any claim in this regard. (1 square metre = 10.764 square feet). E & OE.



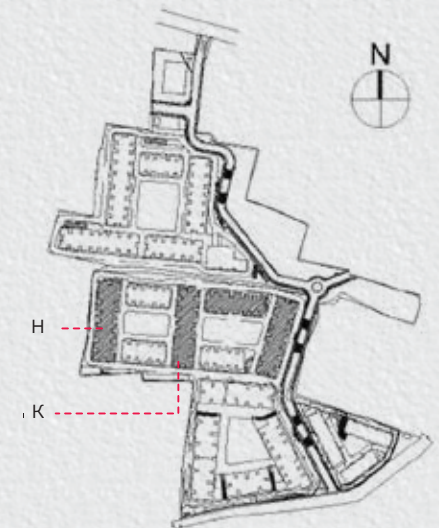


# Unit PLAN

TYPE 3  
3BHK + 3T



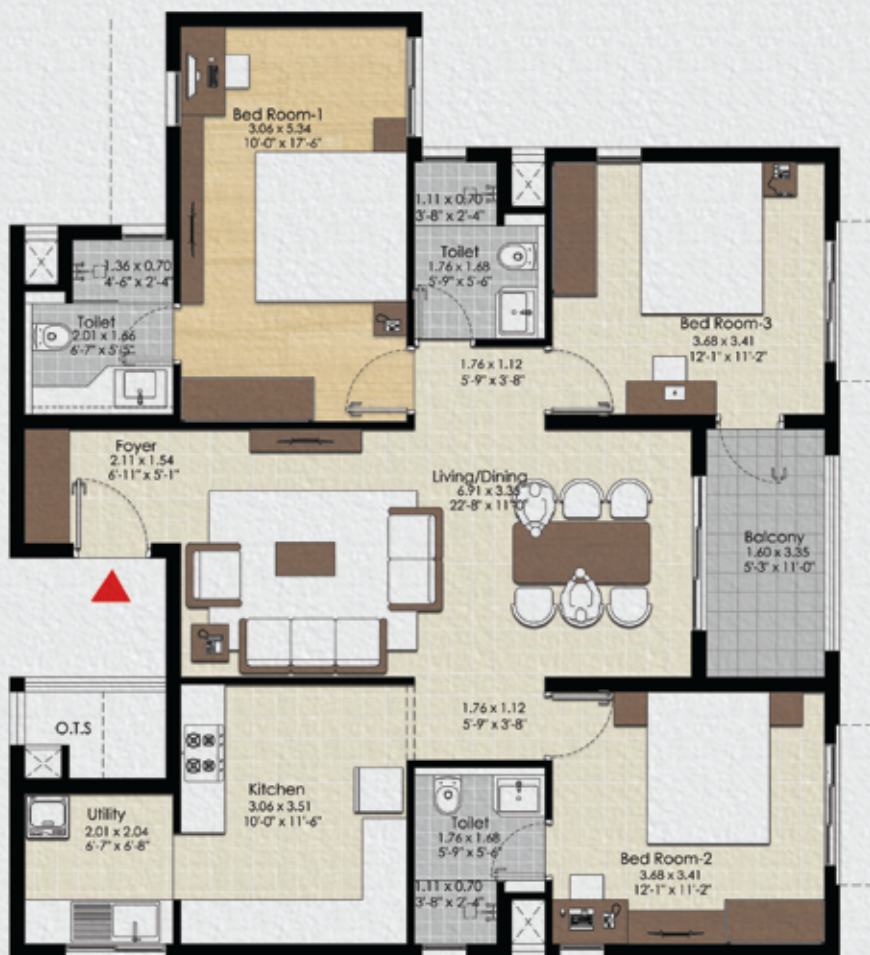
Ground Floor Plan



SUPER BUILT-UP AREA	CARPET AREA	BALCONY/ UTILITY AREA
152.23 SQ. M / 1639 SQ. FT	101.80 SQ. M / 1095 SQ. FT	5.36 SQ. M / 58 SQ. FT

The information depicted herein viz., master plans, floor plans, furniture layout, fittings, illustrations, specifications, designs, dimensions, rendered views, colours, amenities and facilities etc., are subject to change without notifications as may be required by the relevant authorities or the developer's architect, and cannot form part of an offer or contract. Whilst every care is taken in providing this information, the Developer cannot be held liable for variations. All illustrations and pictures are artist's impression only. The information are subject to variations, additions, deletions, substitutions and modifications as may be recommended by the company's architect and/or the relevant approving authorities. The Developer is wholly exempt from any liability on account of any claim in this regard. (1 square metre = 10.764 square feet). E & OE.





# Unit PLAN

TYPE 4  
3BHK + 3T



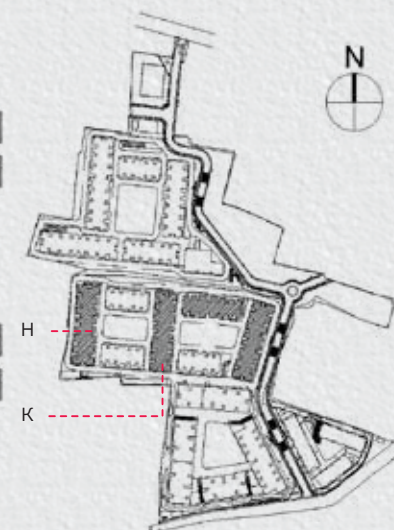
**BLOCK K**  
First & Typical Floor Plan



**BLOCK H**  
First & Typical Floor Plan



**BLOCK K**  
Ground Floor Plan



SUPER BUILT-UP AREA	CARPET AREA	BALCONY/ UTILITY AREA
153.92 SQ.M./ 1657 SQ.FT.	102.30 SQ.M./ 1101 SQ.FT.	5.36 SQ.M./ 58 SQ.FT.

The information depicted herein viz., master plans, floor plans, furniture layout, fittings, illustrations, specifications, designs, dimensions, rendered views, colours, amenities and facilities etc., are subject to change without notifications as may be required by the relevant authorities or the developer's architect, and cannot form part of an offer or contract. Whilst every care is taken in providing this information, the Developer cannot be held liable for variations. All illustrations and pictures are artist's impression only. The information are subject to variations, additions, deletions, substitutions and modifications as may be recommended by the company's architect and/or the relevant approving authorities. The Developer is wholly exempt from any liability on account of any claim in this regard. (1 square metre = 10.764 square feet). E & OE.



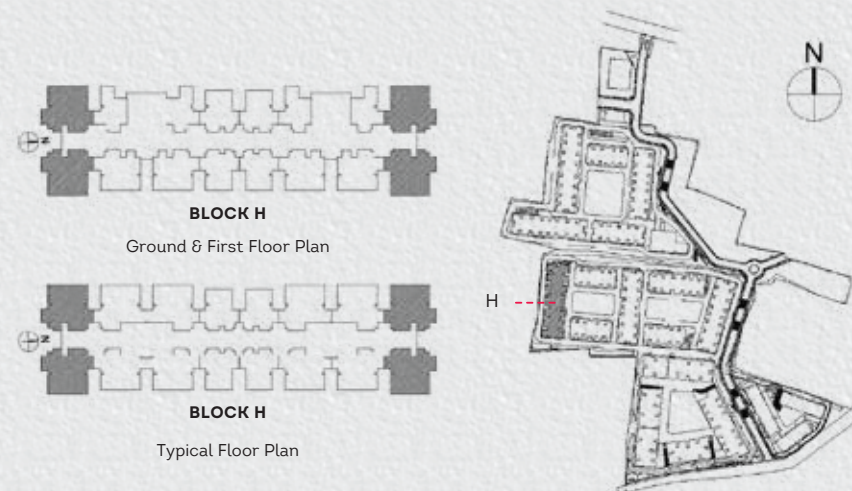






# Unit PLAN

TYPE 6  
3BHK + 3T + MAID'S ROOM



SUPER BUILT-UP AREA	CARPET AREA	BALCONY/ UTILITY AREA
183.77 SQ.M./ 1978 SQ.FT.	124.49 SQ.M./ 1340 SQ.FT.	5.36 SQ.M./ 58 SQ.FT.

The information depicted herein viz., master plans, floor plans, furniture layout, fittings, illustrations, specifications, designs, dimensions, rendered views, colours, amenities and facilities etc., are subject to change without notifications as may be required by the relevant authorities or the developer's architect, and cannot form part of an offer or contract. Whilst every care is taken in providing this information, the Developer cannot be held liable for variations. All illustrations and pictures are artist's impression only. The information are subject to variations, additions, deletions, substitutions and modifications as may be recommended by the company's architect and/or the relevant approving authorities. The Developer is wholly exempt from any liability on account of any claim in this regard. (1 square metre = 10.764 square feet). E & OE.